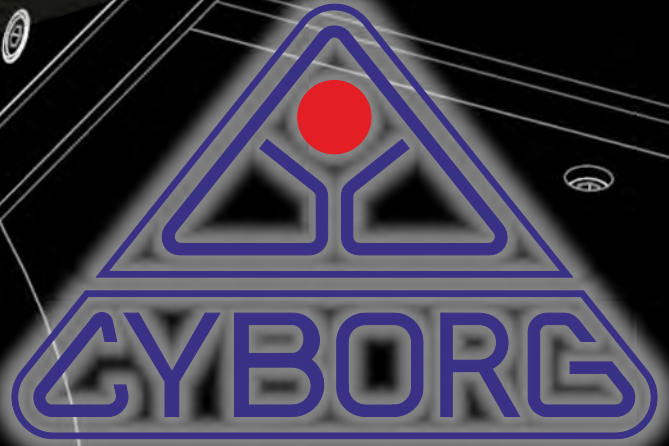
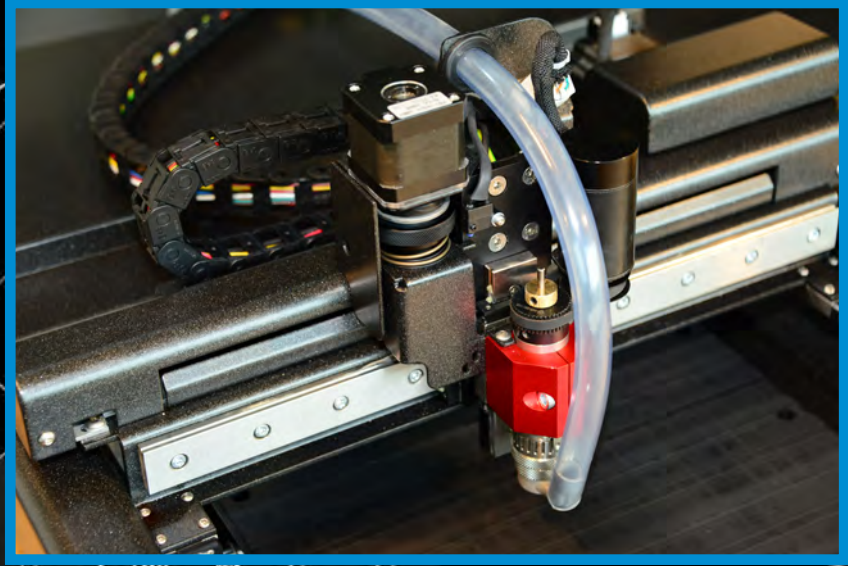
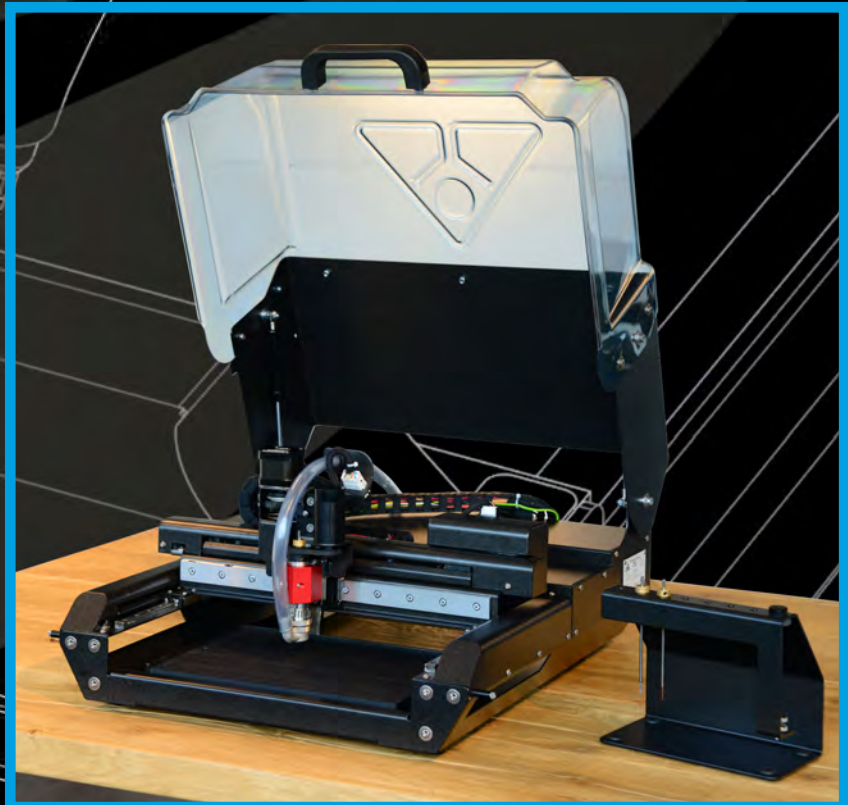


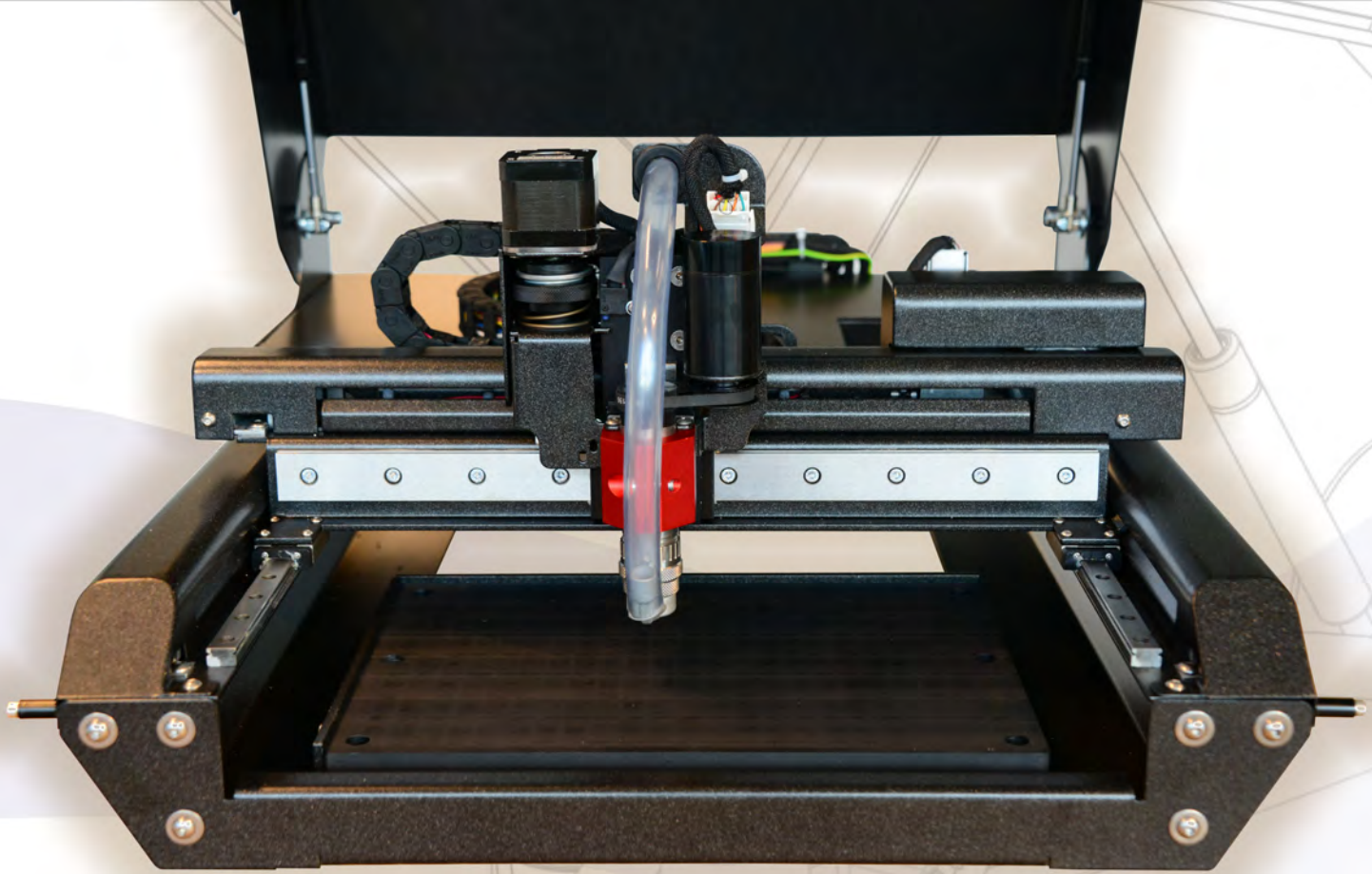
CNC engraving machine

designed and made in Belgium



X-300





This powerful engraver has everything your company needs to engrave tags, medals, identification plates, gifts and trophies, with minimal effort and maximal efficiency.

The Cyborg X-300 combines state of the art technology with very advanced software and more than 40 pre-defined real single and multiple stroke engraving fonts.

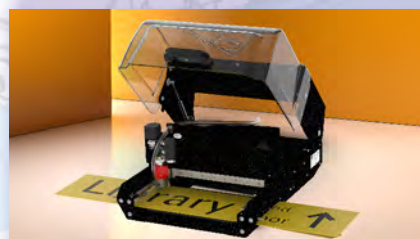
This powerful device does what you really expect from an engraver. Build layouts automatically, detailed, fast, create multiples, merge layouts with data from your Excel files, add automatic serial numbers, and engrave them faster than a laser can, with better quality results, with no poisonous odours, no material limitations, no hassles, just the results that you need, always in time, always flexible, time and time again.

The open bed concept allows to engrave „tall plates“ thanks to the passthrough from front to back, so does it allow to engrave „long plates“ thanks to the passthrough from left to right. The standard engraving table can easily be swapped with a selfcentering vise or a vacuum table.



The optional vise can be equipped with clamping jigs for one medal, for 3 medals, for pens or odd shaped objects, and more...

Every Cyborg X-300 is supplied with a tool stand in which cutters can easily be preset. Changing cutters and obtaining equal engraving depths is a matter of seconds (see image below).



The perfect identification machine for:

- * warehouse management
- * botanical gardens & zoos
- * undertakers & crematoriums
- * social housing companies
- * offshore and oil companies
- * electrical installations
- * food and beverage industry
- * labels for art objects
- * mailbox and doorbell plates
- * forest management
- * communities & cities
- * plant nurseries



- * panel builders
- * museums
- * hospitals
- * trophy dealers
- * gift shops

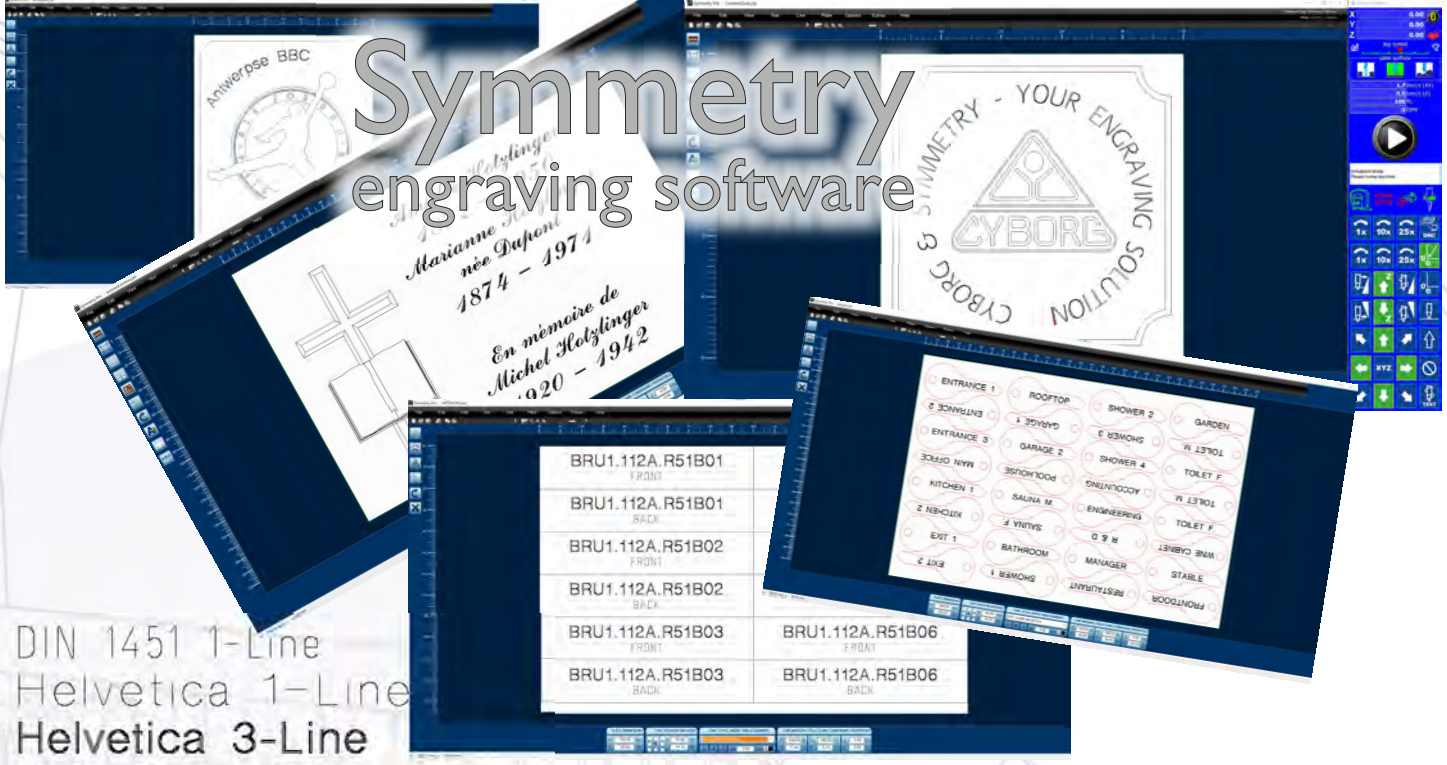


Fully compliant with the applicable CE machinery directive, user safety, EMC and electrical safety. (Survey by „Certification Experts“ - NI)

Symmetry engraving software

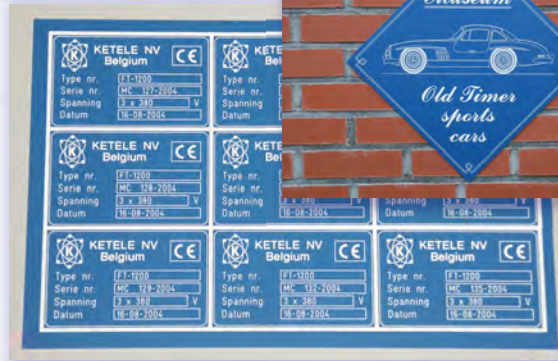
this is a small selection of the more than 40 engraving fonts

- DIN 1451 1-Line
- Helvetica 1-Line
- Helvetica 3-Line
- Helvetica 6-Line**
- Flora Normal 3-Line
- Flora Bold 5-Line**
- Commercial Script*
- CENTURY 2-LINE
- Old English 3-Line
- Fritz Quadrata 3-Line
- Univers 55 6-Line
- CONTEMPORARY 1LINE
- FUTURA 1-LINE
- STENCIL GOTHIC
- Optima 5-Line



The Symmetry engraving software has been developed especially for plate engraving with many powerful yet very user friendly features:

- * build layouts quickly and easily.
- * allow to merge layouts with external .txt or .csv files.
- * use predefined single and multiple stroke engraving fonts.
- * engrave normal, sideways, upside down, mirror etc.
- * easily engrave multiple plates and cut them out on the engraving table.
- * save, and reload often used layouts with or without texts.
- * combine layouts with logos and plot files.
- * allow for advanced automatic serial numbering in multiples and batch plates.



Cyborg X-300 specs:

brand :	Cyborg	Max. platesize X:	200 mm x unlimited
model :	X-300	Max. platesize Y:	300 mm x unlimited
power supply 1 :	220-230 V -50 Hz	Home positions:	9 (programmable)
power supply 2 :	115 V - 60 Hz	X resolution :	950 microsteps/mm
engraving area :	300 mm x 200 mm	Y resolution :	950 microsteps/mm
X movement :	fiberglass timingbelt	Z resolution :	5000 microsteps/mm
Y movement :	fiberglass timingbelt	net weight :	27 kg.
Z travel :	30 mm	total width :	535 mm
Z movement :	leadscrew	total depth :	650 mm
cutter size :	3,17 mm x 125 mm	total height :	300 mm (closed)
spindle speed :	5000 - 20000 rpm	gross weight :	30 kg.
spindle motor :	brushless DC servo	total box width:	610 mm
Z leadscrew nut :	anti-backlash	total box depth:	730 mm
engraving soft :	Symmetry, included	total box height:	370 mm
language :	standard G-code		

accessories and options

- * full carbide cutter (different tip widths) Ø 3,175 mm x 125 mm (1 pc. included)
- * cutter knob Ø 3,175 mm (1 pc. included)
- * cutter stand with engraving depth preset function (1 pc. included)
- * full carbide cutter to cut scoring lines Ø 3,175 mm x 125 mm (option)
- * diamond tipped cutter Ø 3,175 mm x 125 mm to scratch engrave metals (option)
- * self centering vise, without jigs (option)
- * jig sets for small plates, medals, pens, odd shaped objects, pewter dishes... (option)



Ketele NV

Industriezone Blauwe steen
Blauwesteenstraat, 91
2550 Kontich
Belgium
tel +32/3 454.20.89
<https://www.cyborg-engravers.com>

dealer :

Cyborg virtual pendent

